

I. Scholarships and Fellowships

- **UG:** Oberlin Conservatory of Music Offers International Student Financial Aid
- **UG & Grad:** International Merit Scholarships up to **\$5,000** Grand Valley State University
- **UG & Grad:** The Google Anita Borg Memorial Scholarship Offers up to **\$10,000**

II. News you can use

- Johnson & Wales University Offers English Language Program
- **Blog:** Writing an Essay for ACT & SAT
- **New Video:** Timo From New Zealand Discusses Motivations for Studying in the U.S.
- **EdUSA Connects Live:** March Schedule on Standardized Admissions Tests

I. Scholarships and Fellowships

OBERLIN CONSERVATORY OF MUSIC OFFERS INTERNATIONAL STUDENT FINANCIAL AID

Oberlin is privileged to be one of the few American colleges and universities able to offer substantial financial assistance to international students. As an institution committed to ethnic, experiential, and economic diversity, Oberlin provides grants, scholarships, loans, and on-campus employment to enable international students to meet all demonstrated financial need.



More than 80 percent of our international students receive institutional financial aid, with the average aid package covering about three-quarters of the cost of attendance. However, the international financial aid budget is not unlimited. Consequently, the international admission process is extremely competitive—particularly for students with high financial need. Fewer than 15 percent of international applicants are admitted in a typical year.

All international applicants wishing to be considered for financial aid must so indicate on their application. Please keep in mind that admission and financial aid decisions cannot be reached until all necessary documentation has been received by the Office of Admissions.

For more information, visit: <http://bit.ly/dLsI4d>

INTERNATIONAL MERIT SCHOLARSHIPS UP TO \$5,000 GRAND VALLEY STATE UNIVERSITY

Every year, Grand Valley awards a limited number of International Merit Scholarships to incoming international students who have demonstrated an outstanding academic achievement record. The value of this scholarship is **\$5,000** per year.



All students who submit a complete application for admission by **May 1** are eligible for this merit-based scholarship. In addition, students must write an essay of approximately 1,000 words on the following topic: "What will I do to bring cultural and international perspectives to Grand Valley that will enhance the learning environment for the entire GVSU community?"

Typically, qualified students have a minimum 3.0 grade point average, but decisions are based on academic credentials, the scholarship essay and information provided in the application materials. Transfer students from U.S. four-year colleges and universities, and students being fully funded by their government are not eligible.

For more information, visit: <http://bit.ly/hzA45A>

THE GOOGLE ANITA BORG MEMORIAL SCHOLARSHIP OFFERS UP TO \$10,000

Dr. Anita Borg devoted her adult life to revolutionizing the way we think about technology and dismantling barriers that keep women and minorities from entering computing and technology fields. Her combination of technical expertise and fearless vision continues to inspire and motivate countless women to become active participants and leaders in creating technology. In her honor, Google is proud to honor Anita's memory and support women in technology with the Google Anita Borg Memorial Scholarship. Google hopes to encourage women to excel in computing and technology and become active role models and leaders in the field.



**Dr. Anita Borg
(1949-2003)**

Google Anita Borg Scholarship recipients will each receive a financial award for the academic year. A group of female undergraduate and graduate students will be chosen from the applicant pool, and scholarships will be awarded based on the strength of each candidate's academic background and demonstrated leadership.

In addition, all scholarship recipients and finalists will be invited to attend a retreat at Google. We know how important a supportive peer network can be for a student's success. The retreat will include workshops, speakers, panelists, breakout sessions and social activities scheduled over a couple of days.

For more information, visit: <http://bit.ly/icceeU>

II. News You Can Use

JOHNSON & WALES UNIVERSITY OFFERS ENGLISH LANGUAGE PROGRAM

Johnson & Wales University's North Miami Campus will offer the English as a Second Language Program (ESL) beginning this September 2011. The ESL Program provides instruction in speaking, listening, reading and writing for non-native speakers of English from the low, intermediate and advanced level.



JOHNSON & WALES
UNIVERSITY

"Offering this program is a great fit for our campus because of our growing international student base and geographical location," said Loreen Chant, president, North Miami Campus, "Miami is known around the world as an international destination and students recognize the unique opportunities available here for those who are multi-lingual."

The program is designed to prepare students in the language skills necessary for successful academic work. Students who complete the ESL Program will matriculate into a JWU degree program. In addition to the ESL Program, the university provides support services designed to help students manage their visa status, access benefits and find jobs. Student life also provides experiential opportunities such as cultural outings and trips that complement in-classroom experiences.

For more information about the ESL Program contact Vanessa Blanco at (+1) 305-892-7060 or kkrieger@jwu.edu

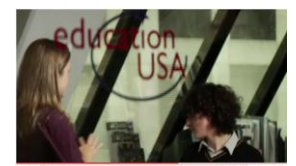
BLOG: WRITING AN ESSAY FOR ACT & SAT

Misplaced modifiers? Run-on sentences? Subject/Verb agreement? Are you worried about writing that essay for the ACT or SAT? If you're looking for ways to improve your grammar, the "SAT+ACT+writing" blog available provides easy to use tips and tools for preparing for college entrance exams and applications.

Read More: <http://winrow.wordpress.com/>

NEW VIDEO: TIMO FROM NEW ZEALAND DISCUSSES MOTIVATIONS FOR STUDYING IN THE U.S.

Timo Feeny-Toebes is a high school student from Wellington, New Zealand, who is planning to undertake his undergraduate university study in the United States of America. In this video, Timo discusses his motivations for studying in the US, and how he navigated his way through the college admissions process with the help of the EducationUSA advising service.



Watch Video: <http://bit.ly/gVZDIM>

EDUSA CONNECTS LIVE: MARCH SCHEDULE ON STANDARDIZED ADMISSIONS TESTS



Did you know that entry requirements can vary across the more than 4,900 colleges & universities in the United States? It is important to determine which standardized admissions tests, if any, are required when you are researching your choices. Experts from various testing organizations will answer your questions and offer invaluable insight on many of the tests typically required of international students before studying in the U.S.

Participation is free – don't miss this unique opportunity!

<http://edusaconnects.acrobat.com/tests>

Undergraduate Admissions

SAT & ACT

February 1, 2011: 11am – Noon (EST)

February 2, 2011: 7pm – 8pm (EST)

February 10, 2011: 7am – 8am (EST)

College Credit By Examination:

IB, AP, DSST

February 2, 2011: 11am – 1230pm (EST)

IB, AP, GAC

February 4, 2011: 7pm – 830pm (EST)

Graduate Admissions

GRE & GMAT

February 8, 2011: 8am – 9am (EST)

February 9, 2011: 7pm – 8pm (EST)

Graduate Law Admissions

LSAT

February 11, 2011: 7pm – 8pm (EST)

English Proficiency

TOEFL & IELTS

February 23, 2011: 11am – 12pm (EST)

February 24, 2011: 7pm – 8pm (EST)

****For a complete schedule of upcoming presentations, or to view past recordings and chat transcripts, visit:
www.educationusa.info/edusa_connects****